



COVIDIEN, COVIDIEN with logo and ™ marked brands are trademarks of Covidien AG or an affiliate. © 2007 Covidien AG or an affiliate. All rights reserved.

M-CT-VVUe02/GB Rev. 2007/08 TY0576

## Surgical Suction Solutions



Covidien (UK)  
Commercial Ltd.

154 Fareham Road  
Gosport  
Hampshire  
PO13 0AS  
United Kingdom

+44 (0)1329 224 000 [t]  
+44 (0)1329 224 334 [f]

[www.covidien.com](http://www.covidien.com)

# *Total Suction Solutions from Patient to Wall*

04	ARGYLE™ Surgical Suction Cannulas
10	VITAL VUE™ Surgical Instrument
16	ARGYLE Tracheobronchial Suction Catheters
22	SEP-T-VAC™ Collection System
28	ARGYLE Connecting Tubing

## **Contents**



*A comprehensive range of suction cannulas designed to meet every need in the Operating Room.*

**ARGYLE YANKAUERS**

- Complete range of rigid and flexible single use yankauers for suction of fluids.
- Lateral eyes for controlled atraumatic suction.
- Made from high grade transparent materials for visualisation of suction fluids.
- High quality finish with heat moulded rounded distal tips and bevelled edges to minimise tissue trauma, even on the most delicate of tissues.
- Latex free.
- All products are double wrapped for sterile presentation in the Operating Room.



**Flexible Yankauer Tip Options**

**ARGYLE FLEXIBLE YANKAUERS**

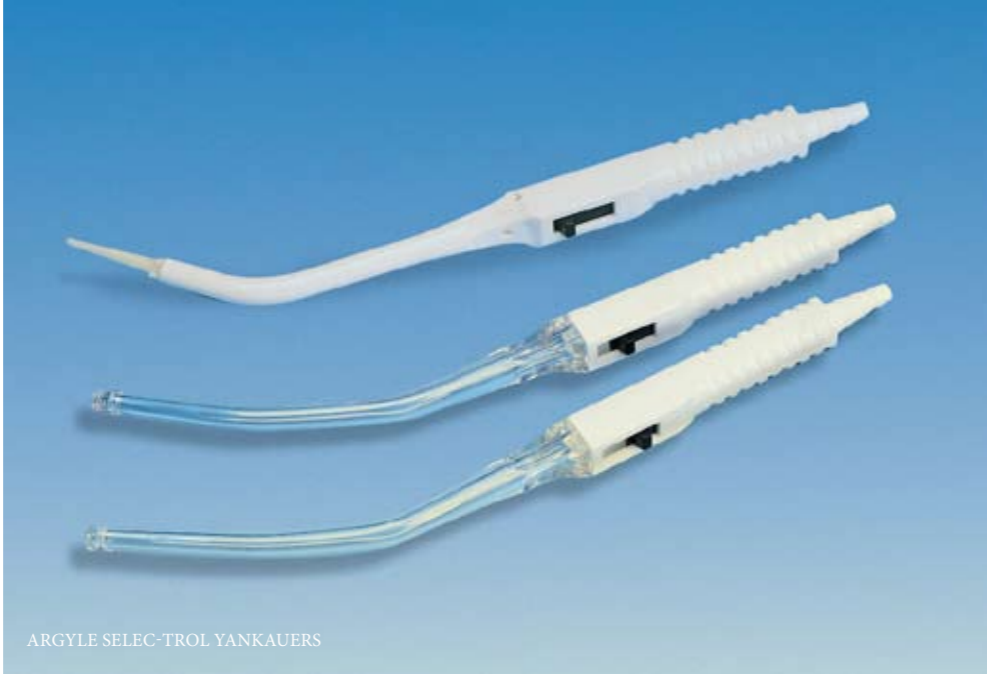
- Sterile, single use.
- Flexible yankauers can be shaped by the user to modify angle and adapt to specific operative sites.
- Wide range of open tips: flat, fine, regular, large, extra large and sump tips.
- Paediatric versions ensure manoeuvrability even in the smallest of spaces.
- Available with or with out TIP-TROL™ finger control for increased suction.
- Tapered proximal end for universal tubing connection as standard.
- Available with SURE-GRIP™ coupling at proximal end for extra safe tubing connection.
- Available as a single yankauer or with pre-connected tubing as part of a set.



**ARGYLE™**  
Surgical Suction Cannulas



**Rigid Yankauer  
Tip Options**



ARGYLE SELEC-TROL YANKAUERS

**ARGYLE RIGID YANKAUERS**

- Sterile, single use.
- Shatter resistant PVC enables instrument to be used for moderate organ retraction or tissue dissection.
- Available with large open or bulb tip.
- Available with or without TIP-TROL finger control for increased suction.
- Ergonomic, non-slip grip handle for assured handling. The original 'finned' handle design makes handling more comfortable for the user during long procedures.
- Stepped proximal end for secure universal tubing connection.

**ARGYLE™ SELEC-TROL™ YANKAUERS**

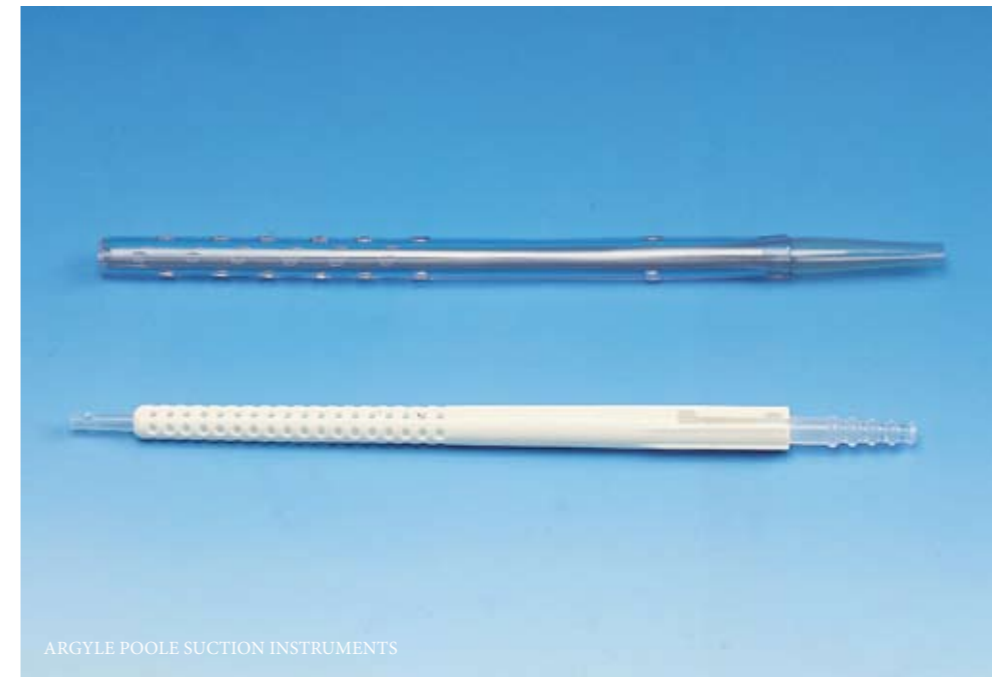
- Sterile, single use.
- Available with large open tip, bulb tip or fine tip.
- Open and Bulb tips are made from transparent high quality PVC with lateral eyes, rounded distal ends and bevelled edges for controlled atraumatic suction, even on the most delicate of tissues.
- Fine tip is made from x-ray opaque polyurethane with a pliable tapered proximal end used for precise suctioning during delicate procedures.
- Patented sliding ON-OFF switch gives the user finger-tip control of suction level and reduces noise levels in the OR.
- Ergonomic, non-slip grip handle for assured handling. The ribbed handle design makes handling more comfortable for the user during long procedures.
- Stepped proximal end for secure universal tubing connection.

**ARGYLE RIGID POOLE SUCTION INSTRUMENTS**

- Sterile, single use.
- Two-piece moveable construction: transparent inner cannula for pin-point suctioning. Opaque outer cannula will 'slide and lock' over inner cannula for Poole suctioning.
- Outer cannula has 108 sideholes and open distal end for high capacity aspiration without risk of tissue invagination.
- Inner cannula has two sideholes and open distal tip to ensure smooth flows.
- Rigid construction allows instrument to be used as a gentle organ retractor or tissue dissector.
- Stepped proximal end for secure universal tubing connection.

**ARGYLE FLEXIBLE POOLE SUCTION INSTRUMENTS**

- Sterile, single use.
- Two-piece fixed construction: transparent inner and outer lumen with fingertip suction control.
- Outer cannula has 24 sideholes and open distal end for smooth sump suctioning without risk of tissue invagination.
- Inner cannula has two sideholes and open distal tip to ensure smooth flows.
- Funnel / tapered proximal end for universal tubing connection.



ARGYLE POOLE SUCTION INSTRUMENTS

**SELEC-TROL Tip Options**



**ORDERING INFORMATION**

Ordering Code	Description	Tip Trol	Size	Length	Box / Packaging
<i>Flexible ARGYLE Yankauer for Paediatric or Dental Applications</i>					
1180113001	No side holes	No	16Fr	16cm	100
1180113050	4 side holes	Yes	16Fr	16cm	100
1180113100	No sideholes	Yes	16Fr	16cm	100
<i>Flexible ARGYLE Yankauer</i>					
8888504001	Fine tip	No	12Fr	25cm	50
8888504019	Fine tip	Yes	12Fr	25cm	50
8888501007	Medium tip	No	18Fr	25cm	50
8888501023	Medium tip	Yes	18Fr	25cm	50
8888501015	Medium tip with sump	No	18Fr	25cm	50
8888501031	Medium tip with sump	Yes	18Fr	25cm	50
1180501205	Medium tip with SURE-GRIP*	No	18Fr	25cm	50
8888502005	Large tip	No	22Fr	25cm	50
8888502013	Large tip with sump	Yes	22Fr	25cm	50
1180502039	Large tip with SURE-GRIP*	No	22Fr	25cm	50
1180504018	Flat tip	No	22Fr	25cm	50
1180503003	Extra large tip	No	30Fr	25cm	50
<i>Flexible ARGYLE Yankauer Sets with Non-Conductive Flexible Tubing</i>					
1180504613	Fine tip 5mm dia tube	No	12Fr	2.2m**	25
1180504639	Fine tip 5mm dia tube	No	12Fr	3.0m**	25
1180504621	Fine tip 5mm dia tube	No	12Fr	4.0m**	25
1180501619	Medium tip 7mm dia tube	No	18Fr	2.2m**	25
1180501635	Medium tip 7mm dia tube	No	18Fr	3.0m**	25
1180501700	Medium tip 7mm dia tube	Yes	18Fr	3.0m**	25
1180502617	Large tip 7mm dia tube	No	22Fr	2.2m**	25
1180502625	Large tip 7mm dia tube	No	22Fr	3.0m**	25
1180502618	Large tip 7mm dia tube	No	22Fr	2.2m**	25
1180502658	Large tip 7mm dia tube	No	22Fr	3.0m**	25

Ordering Code	Description	Tip Trol	Size	Length	Box / Packaging
<i>Flexible ARGYLE Yankauer Sets with Conductive Flexible Tubing</i>					
8888501502	Medium tip 7mm dia tube	No	18Fr	1.8m**	50
8888501510	Medium tip with sump 7mm dia tube	No	18Fr	1.8m**	50
8888501528	Medium tip with sump 7mm dia tube	Yes	18Fr	1.8m**	50
8888502518	Large tip with sump 7mm dia tube	Yes	22Fr	1.8m**	50
<i>Rigid ARGYLE Yankauers</i>					
8888505115	Large Tip	No	22Fr	25cm	50
8888505123	Large Tip	Yes	22Fr	25cm	50
8888505016	Bulb Tip	No	34Fr	26cm	50
8888505024	Bulb Tip	Yes	34Fr	26cm	50
<i>ARGYLE SELEC-TROL Yankauers</i>					
8888505180	Fine tip	On-off switch	9-18Fr	25cm	20
1180505172	Large tip	On-off switch	24Fr	27cm	20
1180505164	Bulb tip	On-off switch	32Fr	27cm	20
<i>ARGYLE Poole Instruments</i>					
8888508002	Flexible Poole	n/a	34Fr	27cm	50
8888509703	Rigid Poole	n/a	14-28Fr	25cm	50
<i>ARGYLE Poole Sets</i>					
1180508515	Flexible Poole with 5mm dia non-cond tube	n/a	34Fr	2.2m**	25
8888509729	Rigid Poole with 5mm dia cond tube	n/a	14-28Fr	1.8m**	50

\* SURE-GRIP proximal end connection  
 \*\* Refers to length of tube only  
 Tube diameter measurements are inner diameters.





VITAL VUE  
Surgical Instrument

### 3-IN-1 DESIGN

The 3-in-1 design of the VITAL VUE surgical instrument provides the surgeon with convenient and immediate access between illumination irrigation and aspiration.

#### Direct benefits of this design include:

- Fewer people / hands / instruments in the surgical site
- Visibility of the site is improved
- Risk of cross-contamination is reduced
- Greater manoeuvrability in smaller or difficult access areas
- Greater control of instrument's use
- "No wait" for illumination, aspiration or irrigation

*The unique surgical instrument designed to improve visibility and manoeuvrability during open surgical procedures.*

#### ILLUMINATION

- Maximum visibility in deep cavity surgery
- Precise directional light source
- Can trans-illuminate tissues
- Can locate elusive bleeders
- Removes the need for continuous re-adjustment of overhead lights
- Removes the need to wear a headlight system

#### IRRIGATION

- Finger tip control provides precise irrigation
- Keeps surgical area 'clean'

#### ASPIRATION

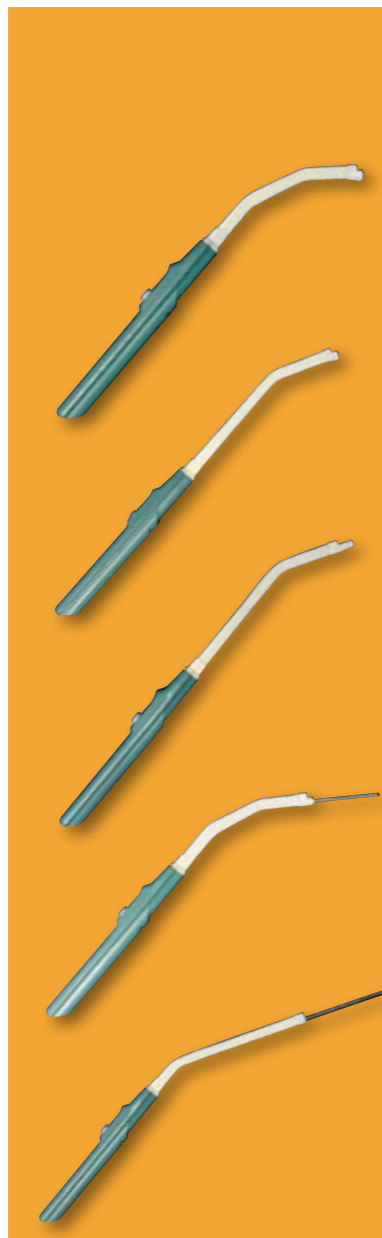
- Finger tip control to create aspiration
- Keeps surgical area clear and free of debris

*The function of the 3-in-1 instrument is as an improved aid to the surgeon; the convenience and benefits have the potential to help reduce procedure times.*



**TIP OPTIONS**

The VITAL VUE instrument is available in five distinct distal procedural tips, allowing the instrument to be used in a number of surgical procedures. The tip options give flexibility according to surgeon's preference and the type of surgery being performed.



**VITAL VUE - BULB TIP**

Used in many gynaecological and plastic surgery cases as well as other shallow procedures where a bulb tip is appropriate

**VITAL VUE - EXTENDED BULB TIP**

For lower abdominal and pelvic cases where extra reach is required and a bulb tip is appropriate

**VITAL VUE - EXTENDED SLENDER TIP**

The tip of choice for surgeons who prefer precise suction with a slender, 1.35cm profile tip. Especially applicable in cases which have a vascular, ductal or tubular nature

**VITAL VUE - EXTENDED METAL TIP**

The 16Fr, 5cm extended metal tip is ideal where reach and precise aspiration is required, such as oral surgery and some vascular cases.

**VITAL VUE - EXTRA LONG EXTENDED METAL TIP**

Designed specifically for orthopaedic cases, this 12Fr, 8cm metal tip is ideal where extra extension is necessary particularly in hip arthroplasty.

**SURGICAL PROCEDURES**

The use of the VITAL VUE instrument has clear benefits to the surgeon when performing various procedures. A few examples have been given below:

**Low Anterior Resection**

Working deep in the abdomen and pelvis, visibility of the surgical area is restricted by other organs and lack of light. With most LAR procedures occurring in men, limited pelvic space also means a smaller operative area where the number of instruments being used in the surgical site can be problematic. The VITAL VUE instrument can provide light directly to the surgical site, and illuminate critical structures before resection. The same instrument can provide instant irrigation and aspiration and therefore time is not wasted changing between instruments.

**Abdominal Hysterectomy**

Deep in the pelvis, space is limited, and visibility poor. The multi-functional VITAL VUE instrument saves on space, illuminating deep into the pelvic area, and can trans-illuminate connective tissues before

resection. The irrigation and aspiration lumens provide instant functions without the need for introducing additional instruments that would otherwise obstruct the surgeon's view and increase procedure time. Instantaneous irrigation and aspiration will assist in maintaining a clear surgical field.

**Hip Arthroplasty**

Ensuring that the newly reamed femur is free from debris and blood and is completely dry is essential before setting the new hip prosthesis in cement. With the instrument's orthopaedic tip, the surgeon can use the bright light to clearly visualise the femoral shaft being irrigated and suctioned free of debris, blood and fluids. The extended metal tip can also be used to remove additional debris once the shaft is created, and will not be affected by electrosurgical currents. Equally, the directional light helps the surgeon work on the acetabulum removing the need for additional lighting, and reducing the number of surgical instruments in this field.



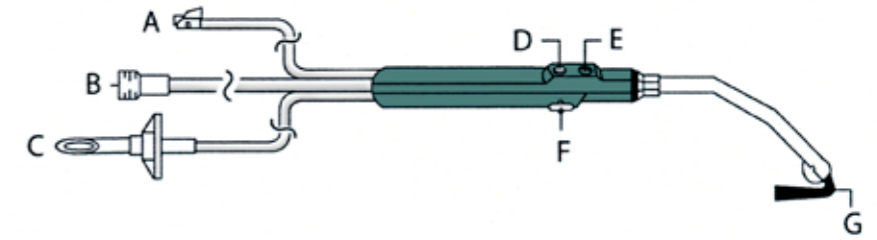
ORDERING INFORMATION

Surgical procedure	8886827906 Bulb Tip	8886828006 Extended Bulb Tip	8886828106 Extended Slender Tip	8886828206 Extended Metal Tip	8886828306 Extra Long Extended Metal Tip
<b>Colorectal</b>					
Abdominal Perineal Resection		•			
Trans Mucosal Excision		•			
Low Anterior Resection		•			
Total Colectomy		•			
<b>General</b>					
Adrenalectomy			•		
Cholecystectomy			•		
Cholecystojejunostomy			•		
Choledochoduodenostomy			•		
Common Bile Duct Exploration			•		
Exploratory Laparotomy		•			
Gastric Bypass		•			
Gastric Resection		•			
Gastroplasty		•			
Hepatic Procedures			•		
Hiatus Hernia			•		
Lymph Node Dissection			•		
Splenectomy			•		
Vagotomy			•		
Whipple Procedure		•			
Other Oncological Procedures		•			
<b>Gynaecological</b>					
Abdominal Hysterectomy	•				
Abdominal Hysterectomy-Obese Patient		•			
Exploratory Laparotomy		•			
Lymph Node Dissection			•		
Tubal ligation			•		
Tuboplasty			•		
Vaginal Hysterectomy	•				
<b>Oral</b>					
Genioplasty				•	
Mandibular Osteotomy				•	
Maxillary Osteotomy				•	
Total Mandibular Joint Procedures				•	
Tonsillectomy				•	
Block dissection				•	
<b>Orthopaedic</b>					
Cruciate Repair	•				
Hip Arthroplasty					•
<b>Plastic</b>					
Abdominoplasty	•				
Augmentation Mammoplasty	•				
Craniofacial Reconstruction				•	
Skin Flaps	•				
Reconstruction Mammoplasty	•				
Rhytidoplasty			•		
<b>Thoracic</b>					
Oesophagectomy			•		
Lobectomy			•		
Pneumonectomy			•		
Pulmonary Tumor			•		
<b>Urology</b>					
Adrenalectomy			•		
Bladder Suspension		•			
Cystectomy		•			
Nephrectomy			•		
Prostatectomy		•			
Renal Decapsulation			•		
Ureteral Procedures			•		
<b>Vascular</b>					
Aortic Aneurysm			•		
Carotid Endarterectomy			•		
Femoral Popliteal Bypass			•		
Lymph Node Dissection			•		

VITAL VUE LIGHT POWER SOURCE



VITAL VUE SURGICAL INSTRUMENT



ORDERING INFORMATION

Ordering Code	Description	Box / Packaging
<i>VITAL VUE Surgical Instrument</i>		
8886827906	VITAL VUE Bulb Tip	6
8886828006	VITAL VUE Extended Bulb Tip	6
8886828106	VITAL VUE Extended Slender Tip	6
8886828206	VITAL VUE Extended Metal Tip	6
8886828306	VITAL VUE Extra Long Extended Metal Tip	6

- A) Light Plug
- B) Suction Connector
- C) Spike
- D) Irrigation Button
- E) Suction Bleed Hole
- F) Irrigation Button Retainer Clip
- G) Bright Obturator (Styler)

<i>VITAL VUE Light Power Source</i>		
8886828421	GB VITAL-VUE LIGHT POWER SOURCE X1 (3-pin UK plug)	1
8886828422	ES VITAL-VUE LIGHT POWER SOURCE X1 (2-pin EU plug)	1
8886828423	DE VITAL-VUE LIGHT POWER SOURCE X1 (2-pin EU plug)	1
8886828424	IT VITAL-VUE LIGHT POWER SOURCE X1 (2-pin EU plug)	1
8886828425	FR VITAL-VUE LIGHT POWER SOURCE X1 (2-pin EU plug)	1
8886828426	JP VITAL-VUE LIGHT POWER SOURCE X1 (2-pin EU plug)	1
F090481	European 2-pin plug for 220v English Light Power Source	1







ARGYLE TOUCH-TROL

**ARGYLE™ TOUCH-TROL™**

- Tracheobronchial suction catheter for avoiding suction trauma
- Uniformly distributed flow
  - Colour coded
  - Suitable for aspiration of mucous from the tracheobronchial tract
  - Medical grade PVC
  - Tube for bronchial suction with bevelled, atraumatic tip
  - Available with the TOUCH-TROL suction control system
  - With one central hole and two side eyes to protect the mucosa from invagination



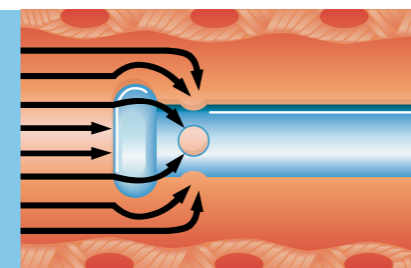
ARGYLE SURE-GRIP

**ARGYLE™ SURE-GRIP™**

- Standard Tracheobronchial suction catheter
- Tubing for bronchial suction with bevelled, Atraumatic tip
  - With one central and two side eyes, or with no side holes
  - SURE-GRIP connector
  - Colour coded
  - Suitable for aspirating mucous from the tracheobronchial tract
  - Medical grade PVC

**ARGYLE™ AERO-FLO™**

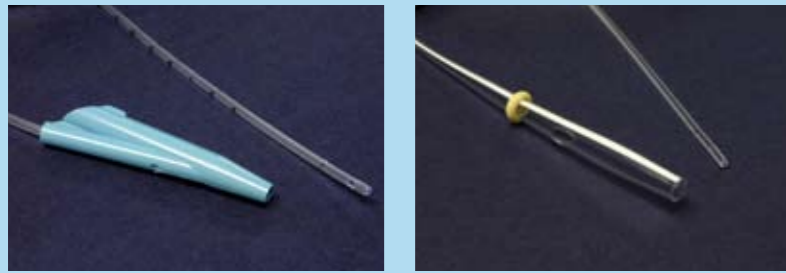
- Tracheobronchial suction catheter with Atraumatic tip
- Available with the TOUCH-TROL suction control system and funnel connector
  - SLIDE-TEX™ external finish
  - Also available with DIRECTROL™ undulated tip to facilitate placement into the bronchial cavities
  - Medical grade PVC
  - Tube for bronchial suction with atraumatic “ring” tip
  - With one central hole and four side holes to protect the mucosa from invagination and avoid suction trauma
  - Uniformly distributed flow



ARGYLE AERO-FLO

ARGYLE  
Tracheobronchial Suction Catheters





**ARGYLE**

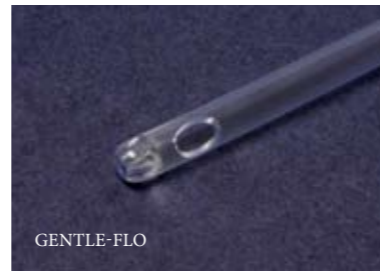
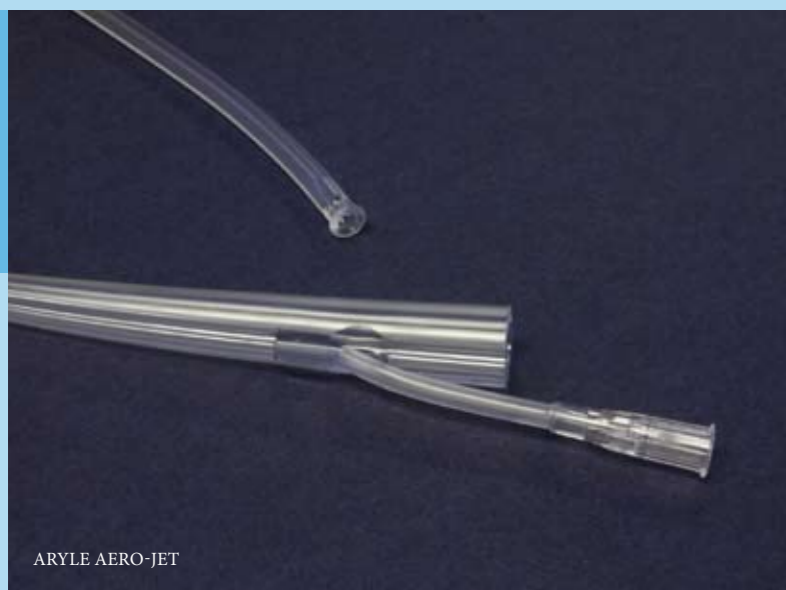
Paediatric Tracheobronchial suction catheter

- Available with the TIP-TROL™ or TOUCH-TROL suction control systems
- TOUCH-TROL version has one central hole, two side eyes and 10mm metric markings
- In the TIP-TROL version, it has one central hole and one side hole, radiopaque markers and a latex cuff
- Medical grade PVC

**ARGYLE™ AERO-JET™**

Tracheobronchial suction and lavage catheter

- Two-way bronchial suction and lavage tube
- AERO-FLO™ atraumatic “ring” tip
- With one central hole and four side holes
- With a second lumen for bronchial lavage with a Luer connector
- Available with the TOUCH-TROL suction control system
- Radiopaque
- Medical grade PVC



**GENTLE-FLO™**

Tracheobronchial suction catheter with Atraumatic tip

- Atraumatic tube for bronchial suction
- With one central lumen and 4 elliptical side holes to protect the mucosa from invagination and avoid suction trauma
- Uniformly distributed flow
- Available with 2 different kinds of connector: Funnel or TOUCH-TROL suction control system
- Colour coded
- Available with a rounded or coude tip (only for TOUCH-TROL)
- Medical grade PVC, particularly soft and thermosensitive with a SATIN SLIP surface that guarantees minimal trauma during insertion and extraction



**ARGYLE SPECIMEN TRAP**

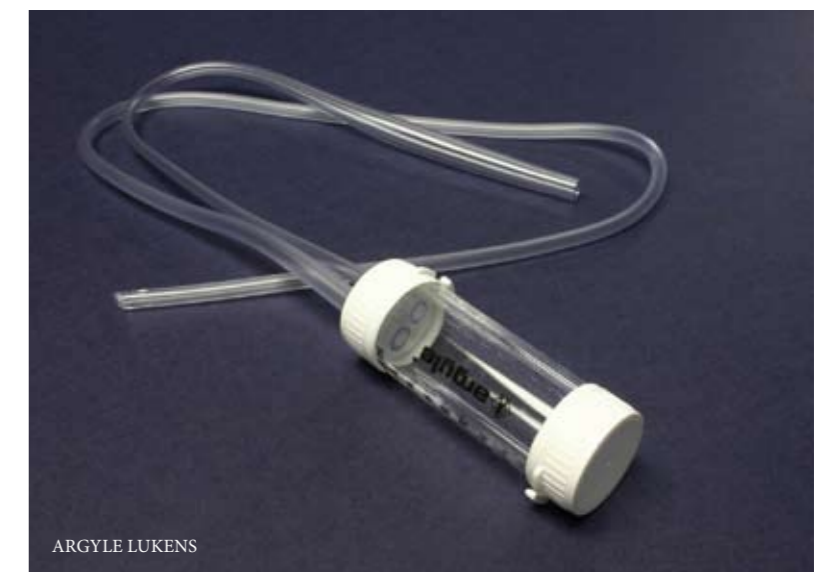
Specimen trap for bronchial secretions

- Also useable with a bronchoscope
- Preassembled
- Screw-on cap
- Removable male connector
- Latex connection tube
- Transparent specimen trap graduated 1 cc intervals
- Sticky, pressure-sensitive label for patient identification

**ARGYLE DELEE**

System for suctioning bronchial secretions and collecting mucous

- Suction catheter with SLIDE-TEX finish
- Transparent specimen trap graduated at 2 cc intervals
- Removable container cap
- Tube with moulded mouthpiece
- Preassembled
- Medical grade PVC



**ARGYLE LUKENS**

ARGYLE System for suctioning bronchial secretions and collecting mucous

- Whistle-tip suction catheter with SLIDE-TEX finish
- Transparent 20 cc specimen trap graduated at 2 cc intervals
- Removable container cap
- Additional cap
- Suction tube with universal connector
- Sticky label for patient



ORDERING INFORMATION

Ordering Code	Description	Colour Code	CH	Length	Box / Packaging	
<i>ARGYLE™ SCOTSMAN™ Suction Catheter with vacuum breaker</i>						
1180851055	Standard Suction Catheter with Vacuum Breaker Connector and 2 Side eyes	Violet	5	30	50	
1180851063		Light Green	6	44	100	
1180851071		Light Green	6	30	50	
1180851089		Blue	8	45	100	
1180851097		Blue	8	30	50	
1180851105		Black	10	45	100	
1180851121		White	12	50	100	
1180851147		Green	14	50	100	
1180851162		Orange	16	50	100	
1180851188		Red	18	50	100	
<i>ARGYLE Suction Catheter with SURE-GRIP™ Moulded Funnel Connector</i>						
1180853069	Standard Suction Catheter with SURE GRIP Funnel Connector and 2 Side Eyes	Transparent	6	50	100	
1180853085		Blue	8	50	100	
1180853101		Black	10	50	100	
1180853127		White	12	50	100	
1180853143		Green	14	50	100	
1180853168		Orange	16	50	100	
1180853184		Red	18	50	100	
<i>ARGYLE Suction Catheter with Integrated Funnel Connector</i>						
1180830067	Standard suction Catheter with Integrated Funnel Connector and One Side Eye	Green	6	45	100	
1180830083		Blue	8	45	100	
1180830109		Black	10	50	100	
1180830125		White	12	50	100	
1180830141		Green	14	50	100	
1180830166		Orange	16	50	100	
1180830182		Red	18	50	100	
1180830117		Black	10	54	100	
<i>ARGYLE AERO-FLO Suction Catheter for Atraumatic Suction</i>						
8888250092		Atraumatic Suction Catheter with TOUCH-TROL Vacuum Breaker Connector	Lavander	5	25	50
8888250118	Blue		8	40	50	
8888250126	Black		10	52	50	
8888250134	White		12	52	50	
8888250142	Green		14	52	50	
1180250159	Orange		16	52	50	
1180250415	Blue		8	48	50	
1180250423	Black		10	48	50	
1180250431	White		12	48	50	
1180250449	Green		14	48	50	
1180250456	Atraumatic Suction Catheter with Integrated Funnel Connector	Green	14	63	50	
1180250464		Orange	16	48	50	
1180250472		Orange	16	63	50	
1180251736		Atraumatic Suction Catheter with TOUCH-TROL Vacuum Brteaker Connector and Coudé Tip	Black	10	51	50
1180251744		White	12	51	50	
1180251751		Green	14	51	50	
1180251769		Black				
1180250811		Atraumatic Suction Catheter with Funnel Connector and Coudé Tip	Blue	8	40	50
1180250829			Black	10	52	50
1180250837			white	12	52	50
1180250845	Green		14	52	50	
1180250860	Green		14	65	50	
1180250852	Orange		16	52	50	

Ordering Code	Description	Colour Code	CH	Length	Box / Packaging
1180250514	Atraumatic Suction Catheter with TOUCH-TROL Vacuum Breaker and Directrol Undulated Tip	White	12	53	50
1180250522		Green	14	53	50
1180250001	Atraumatic Suction Catheter with integrated funnel and directrol Undulated Tip	Black	10	53	50
1180250019		White	12	53	50
1180250027		Green	14	53	50
<i>ARGYLE AERO-JET Suction Catheter for Bronchial Lavage</i>					
1180250738	Dual Lumen Bronchial suction Catheter with TOUCH-TROL Vacuum Breaker Connector	White	12	47	50
1180250746		Green	14	47	50
1180250753		Orange	16	47	50
1180250928	Dual Lumen Bronchial Suction Catheter with Integrated Funnel Connector	Black	10	47	50
1180250936		white	12	47	50
1180250944		Green	14	47	50
1180250951		Orange	16	47	50
1180250563	Dual Lumen Bronchial Suction Catheter with TOUCH-TROL Vacuum Breaker and Directrol Distal End	White	12	49	50
1180250571		Green	14	47	50
1180250050	Dual Lumen Bronchial Suction Catheter with Integrated Funnel Connector and Directrol Distal End	Black	10	51	50
1180250068		White	12	51	50
1180250076		Green	14	51	50

Ordering Code	Description	Colour Code	CH	Length	Box / Packaging	
<i>GENTLE-FLO™ Suction Catheter for Atraumatic Suction</i>						
2058	Atraumatic Suction Catheter with Funnel Connector	Grey	5	39	100	
2068		Clear Green	6	39	100	
2088		Blue	8	39	100	
2108		Black	10	50	100	
2128		white	12	50	100	
2148		Dark Green	14	50	100	
2168		Orange	16	50	100	
2188		Red	18	50	100	
2108L		Black	10	61	100	
2128L		White	12	61	100	
2148L		Dark green	14	61	100	
2168L		Orange	16	61	100	
2188L		Red	18	61	100	
2051		Atraumatic Suction Catheters with VacTrol Vacuum breaker Connector	Grey	5	39	100
2061			Clear Green	6	39	100
2081	Blue		8	39	100	
2101	Black		10	50	100	
2121	white		12	50	100	
2141	Dark Green		14	50	100	
2161	Orange		16	50	100	
2181	Red		18	50	100	
2101L	Black		10	61	100	
2121L	White		12	61	100	
2141L	Light Green		14	61	100	
2161L	Orange		16	61	100	
2181L	Red		18	61	100	
<i>ARGYLE™ SAF-T-MARK™ Paediatric Suction Catheter</i>						
1180251801	Paediatric Suction Catheter with TOUCH-TROL Connector and 1cm Depth marks		Lavander	5	24	50
1180251819		Green	6	24	50	
1180251827		Blue	8	29	50	
8888256016	Paediatric Suction Catheter with Cuffed Suction Control	Mauve	5	32	50	
8888256024		Green	8	32	50	
<i>ARGYLE Specimen Trap</i>						
8884724000	With Screw top Lid, Without catheter	40ml	25			
8884724504	To be used with bronchoscope	70ml	50			
8884724500	DeLee Neo Safe Bubble	40ml	50			

Ordering Code	Description	Capacity	Box / Packaging
<i>ARGYLE DeLee Mucus Collection with Mouthpiece</i>			
8888257519	Ch 10 Catheter	10ml	50
8888257527	Ch 10 Catheter	20ml	50
8888257535	Ch8 Catheter	20ml	50
8888257550	Ch6 Catheter	20ml	50
<i>ARGYLE DeLee Mucus Collection with Vacuum Breaker</i>			
8888257360	Ch10	20ml	50
8888257378	Ch8	20ml	50
8888257386	Ch6	20ml	50
<i>ARGYLE Lukens Mucus Collection</i>			
8888258608	Ch14 Catheter	20ml	50
<i>ARGYLE Lukens Mucus Collection with Vacuum Breaker and Filter</i>			
8888257469	Ch10 Catheter	20ml	50
8888257477	Ch8 Catheter	20ml	50
8888257485	Ch6 Catheter	20ml	50





SEP-T-VAC liner and canister systems offer the ultimate in safe and reliable disposable fluid suction collection systems.

SEP-T-VAC answers the needs for operator safety in the operating theatre, intensive care and resuscitation.

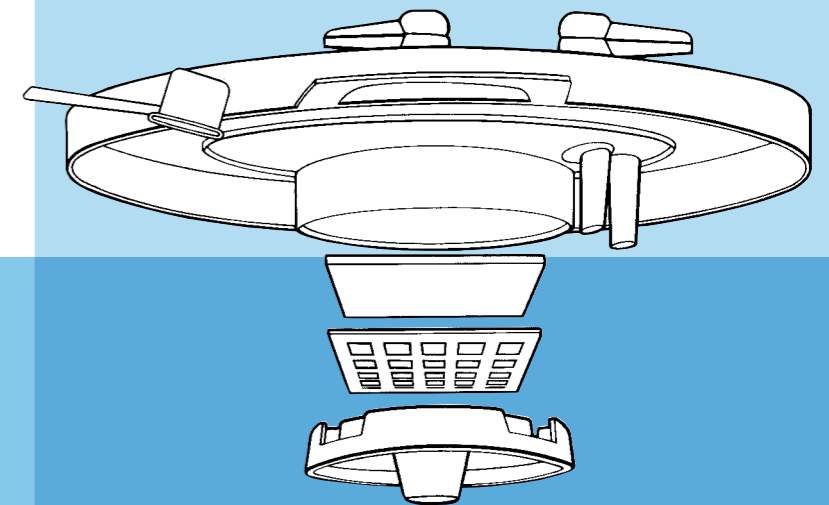


**RIGID SINGLE-USE CANISTERS OR SINGLE-USE LINERS WITH REUSABLE CONTAINERS AVAILABLE.**

- Complete range of sizes
- Precise graduations for monitoring and correct measurement of collected fluids, 25ml graduations from 0 to 200ml and 50ml graduations from 200ml to maximum capacity.
- Up to 12 litres of fluid can be collected

**Easy set-up and preparation.**

- The SEP-T-VAC universal lid in high density polyethylene (HDPE) is easily understood. Each access port is clearly labelled with Patient, Vacuum and Tandem reference marks.
- All port caps are attached to the lid to prevent loss
- Additional port for specimen collection
- Every port is fitted with a specific cap that seals access to reduce the risks of contamination caused by accidental opening
- Angle connectors for easy connection
- The hazards associated with conventional disposal, using glass jars or re-usable systems are eliminated
- Overflow cut-off system for safety and hygiene during and after suction, provides protection against infected fluids and even prevents passage by aerosols and micro-particles. It performs an anti-bacterial, anti-plume, anti-viral and anti-foaming function
- The entire SEP-T-VAC range shares the same connections and the same wide choice of accessories





**SEP-T-VAC™ RIGID CONTAINERS**

- Rigid transparent disposable canister in 100% single-use clear polystyrene. Sturdy and impact resistant, it ensures the best protection against the risks of contamination
- Once used, the device is disposed of directly, without risk of accidental puncture.
- Assembly and replacement is easier and more practical
- Range of sizes available: 0.8 ltr, 1.2 ltr, 2.0 ltr, 3.0 ltr
- Write on surface for patient data and information
- Lid made from high density polyethylene (HDPE)
- Gel powder is available to solidify fluids to make transportation and disposal easier

**Easy set-up and preparation**

- The SEP-T-VAC universal lid in high density polyethylene (HDPE) is easily understood. Each access port is clearly labelled with Patient, Vacuum and Tandem reference marks.
- All port caps are attached to the lid to prevent loss
- Additional port for specimen collection
- Every port is fitted with a specific cap that seals access to reduce the risks of contamination caused by accidental opening
- Angle connectors for easy connection
- The hazards associated with conventional disposal, using glass jars or re-usable systems are eliminated



**SEP-T-VAC LINERS**

- Rigid reusable graduated containers in polycarbonate
- Single-use liner in low density polyethylene (LDPE)
- Easy insertion and removal thanks to the “orange peel” surface
- The liner and lid are ultrasonically welded to ensure security
- A full liner will withstand a drop from a height of 1 metre without breakage
- Available in 3 sizes, 1.2 ltr, 2.0 ltr and 3.0 ltr
- Colour coded angle connectors (Blue: Patient, White: Vacuum) for easy and immediate identification of connections
- Lid in high density polyethylene (HDPE)
- Gel powder is available to solidify fluids to make transportation and disposal easier



A wide range of accessories



**COLLECTION TROLLEY**

Some procedures collect large volumes of fluid. The SEP-T-VAC trolley allows simple, safe and effective collection of up to 12 litres of fluid.

**DISPOSAL BOX (UK ONLY)**

Strong, easy to assemble boxes are available making transit and disposal simple and safe.



**SPECIMEN ADAPTOR**

This 'adapts' the SEP-T-VAC to collect samples of tissue as required. It fits into the large sample port and receives the tubing from the patient.



**BRACKET**

Wall / Rail mount brackets: One size securely fits all sizes of canister.

**GELLING AGENT FOR SAFETY AFTER USE**

Potentially hazardous liquid waste may be solidified using a 'Gelling Agent' which ensures that fluid remains safely contained during transport.

This specialised GEL provides solid solutions to the dangers of fluid waste management in the health care environment.

- Reduced spill risk
- More efficient incineration
- Safer handling

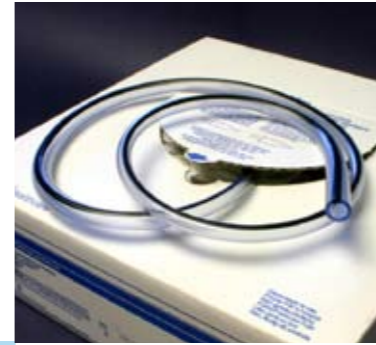


**ORDERING INFORMATION**

Ordering Code	Description	Box / Packaging
<i>SEP-T-VAC Disposable Suction Canisters with Lid</i>		
8888310003	800ml Canister	60
8888310052	1200ml Canister	48
8888310151	2000ml Canister	25
8888310169	3000ml Canister	25
<i>SEP-T-VAC Disposable Liners</i>		
8888310821	1200ml Liner	48
8888310805	2000ml Liner	48
8888310847	3000ml Liner	48
1180310730	1200ml Liner with 1,80m tubing	48
1180310748	2000ml Liner with 1,80m tubing	48
1180310755	3000ml Liner with 1,80m tubing	48
1180310607	1200ml Liner with 1,80m tubing and vacuum stop	48
1180310623	2000ml Liner with 1,80m tubing and vacuum stop	48
1180310672	800ml Canister with 1,80m tubing	40
1180310706	1200ml Canister with 1,80m tubing	36
1180310714	2000ml Canister with 1,80m tubing	36
1180310722	3000ml Canister with 1,80m tubing	25
1180310961	800ml Canister with 1,80m tubing and vacuum stop	40
1180310979	1200ml Canister with 1,80m tubing and vacuum stop	36
1180310789	2000ml Canister with 1,80m tubing and vacuum stop	36

Ordering Code	Description	Box / Packaging
<i>SEP-T-VAC Reusable Liner Containers</i>		
8888310839	1200ml Reusagle liner	12
8888310813	2000ml	12
8888310854	3000ml	5
<i>SEP-T-VAC Accessories</i>		
1180000521	4-Canister Trolley	1
1180000547	4-Canister Trolley with Suction Regulator	1
1180000323	Trolley 2 Canisters	1
1180000331	Floor Stand Holder for 2 Canisters	1
1180000463	Holder for 1200ml Canisters for 1180000031	1
1180000141	Holder for 2000ml Canisters for 1180000031	1
1180000158	Holder for 3000ml Canisters for 1180000031	1
1180000030	Rail Bracket	1
1180000042	Universal Wall plate for 1180000031	1
1180000031	Universal Ring	1
8888310367	Specimen adaptor	10
1180310557	Gelling Agent 20g	100
1180310573	Gelling Agent 200g	20
1180310545	Gelling Agent 1kg	1
1180310906	Tandem Tubing	50
1180310518	Disposal Box 1,2L / 2,0L	20
1180310565	Disposal Box 3,0 L	20





**BUBBLE™ UNIVERSAL TUBING IN MEDICAL GRADE PVC**

- Bubbles at every 90cm
- Low memory prevents twisting and kinking
- Latex free
- ARGYLE range



**ARGYLE CONNECTING TUBES**

Single-handed control of irrigation, aspiration, and illumination during procedures

- Single-use sterile connecting tubes in medical grade PVC
- Available with different types of adapter in various diameters and lengths
- Clear PVC allowing visual examination
- Ribbed tubing avoiding tube collapse
- Low memory preventing kinking
- Available with Anti-Static line

ARGYLE  
Connecting Tubing



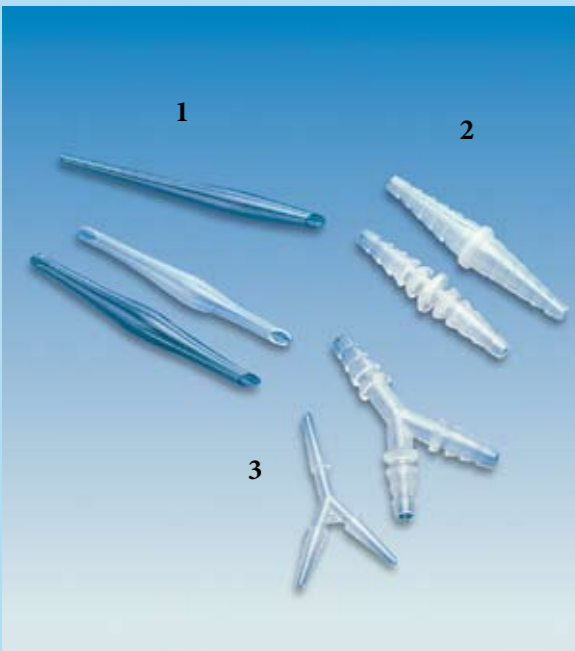
**ARGYLE CONNECTORS / ADAPTERS**

**Adapters for tubes, catheters and probes**

- Adapters of various types and sizes suitable for all types of tubes
- Moulded vinyl, polypropylene, and nylon
- Available in sterile or clean versions

Single Use Disposable Connectors used to connect two or more separate lengths of tubing or to connect catheters or tubing to a syringe. Plastic, Vinyl or PP, Clean or Sterile

- 1- 'SIMS': (Vinyl) connects small ID tubes/catheters to large
- 2- '5 in 1': (All Materials) connects a range of tube sizes Vinyl, 5-11mm, PP/Nylon 8-14mm
- 3- 'Y': PP connects 3 tubes or catheters (Clean or Sterile)
- Small (3-6mm)
- Large (6-13mm)



**MAXI-FLEX™ CONNECTING TUBES**

- Flexible and kink resistant tubing for use in all areas
- No adhesion due to SATIN SLIP™ surface treatment
- HOLDTITE™ connectors for secure connections
- Available with Anti-Static line
- Available in various diameters and lengths



**ORDERING INFORMATION**

Ordering Code	Description	Box / Packaging
<i>ARGYLE Connecting Tubes with Funnel connector</i>		
8888284240	5mm x 1,80m (non conductive)	50
1180284810	5mm x 2,70m (non conductive)	50
1180284828	5mm x 3,00m (non conductive)	50
8888283044	7mm x 1,80m (non conductive)	50
1180283085	7mm x 2,20m (non conductive)	50
1180283101	7mm x 2,70m (non conductive)	50
1180283119	7mm x 3,00m (non conductive)	50
1180283150	7mm x 3,00m (non conductive)	50
8888293100	5mm x 1,80m (conductive)	50
8888293118	5mm x 2,70m (conductive)	50
8888293126	5mm x 3,70m (conductive)	50
8888293514	7mm x 1,80m (conductive)	50

<i>ARGYLE Connecting Tubes with SURE GRIP™</i>		
8888301010	5mm x 1,80m (non conductive)	50
8888301028	5mm x 2,70m (non conductive)	50
8888301036	5mm x 3,70m (non conductive)	50
8888301218	7mm x 1,80m (non conductive)	50
8888301226	7mm x 2,70m (non conductive)	50
8888301234	7mm x 3,70m (non conductive)	50

<i>ARGYLE Connecting Tubes with Finger tip</i>		
1180284836	15mm x 2,50m	25

<i>ARGYLE™ BUBBLE™ Tubing</i>		
8888280206	5mm x 30m (non conductive)	1
8888280602	7mm x 30m (non conductive)	1
1180839035	6mm x 50m (non conductive)	1
8888290601	7mm x 30m (conductive)	1

<i>MAXI-FLEX Connecting tubes with Moulded connector</i>		
1033-6	5mm x 1,80m (non conductive)	25
1033-9	5mm x 2,75m (non conductive)	25
1033-12	5mm x 3,65m (non conductive)	25
1035-6	6mm x 1,80m (non conductive)	25
1035-9	6mm x 2,75m (non conductive)	25
1035-12	6mm x 3,65m (non conductive)	25
1037-6	7mm x 1,80m (non conductive)	25
1037-9	7mm x 2,75m (non conductive)	25
1037-12	7mm x 3,65m (non conductive)	25

Ordering Code	Description	Box / Packaging
1023-6	5mm x 1,80m (conductive)	25
1023-9	5mm x 2,75m (conductive)	25
1023-12	5mm x 3,65m (conductive)	25
1025-6	6mm x 1,80m (conductive)	25
1025-9	6mm x 2,75m (conductive)	25
1025-12	6mm x 3,65m (conductive)	25
1027-6	7mm x 1,80m (conductive)	25
1027-9	7mm x 2,75m (conductive)	25
1027-12	7mm x 3,65m (conductive)	25

<i>BUBBLE Tubing</i>		
1033	5mm x 31m (non conductive)	1
1035	6mm x 31m (non conductive)	1
1037	7mm x 31m (non conductive)	1

1023	5mm x 31m (conductive)	1
1025	6mm x 31m (conductive)	1
1027	7mm x 31m (conductive)	1

<i>ARGYLE Vacuum Stop</i>		
1180310771	Vacuum Stop with paediatric & rail	50
1180310797	Vacuum stop + 5mm x 1,80m Tubing	100

Ordering Code	Description	Adaptable to tube diameters (mm)	Box / Packaging
<i>ARGYLE Adapters</i>			
8888270207	Vinyl for sterile tubes SIMS type	5-11	100
8888271007	Vinyl for sterile tubes 5 in 1 type	5-11	100
8888271411	Sterile polypropylene 5 in 1 type	8-14	100
8888271502	Sterile nylon 5 in 1 type	8-14	100
8888272013	Sterile polypropylene Large 'Y' type	6-13	100
8888270306	Vinyl for clean tubes SIMS type	5-11	100
8888271106	Vinyl for clean tubes 5 in 1 type type	5-11	100
8888271403	Clean polypropylene 5 in 1 type	8-14	100
8888271510	Clean nylon 5 in 1 type	8-14	100
8888272005	Clean polypropylene Large 'Y' type	6-13	50
8888272203	Clean polypropylene Small 'Y' type	3-6	50

